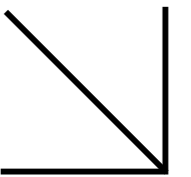


enta200
STEP INTO
MOMENTS OF
STYLE

TK ELEVATOR
MOVES PEOPLE -
THE FUTURE OF
URBAN MOBILITY





enta200 step into moments of style

Stylish and practical, enta200 has been engineered to meet the needs of low-rise residential and commercial applications. Stylish cabin designs combine with the practical features of this machineroom-less elevator to provide a comfortable ride and add value to your project.



Increases your returns

On-trend cabin designs, high performance and efficiency add value to your building.



Underlines your building's premium

Luxury fixtures and striking hall designs elegantly integrate to match and enhance your building's character.



Provides a stylish experience

First class usability and aesthetic environments guarantee passenger satisfaction and comfort.

DESIGNED FOR

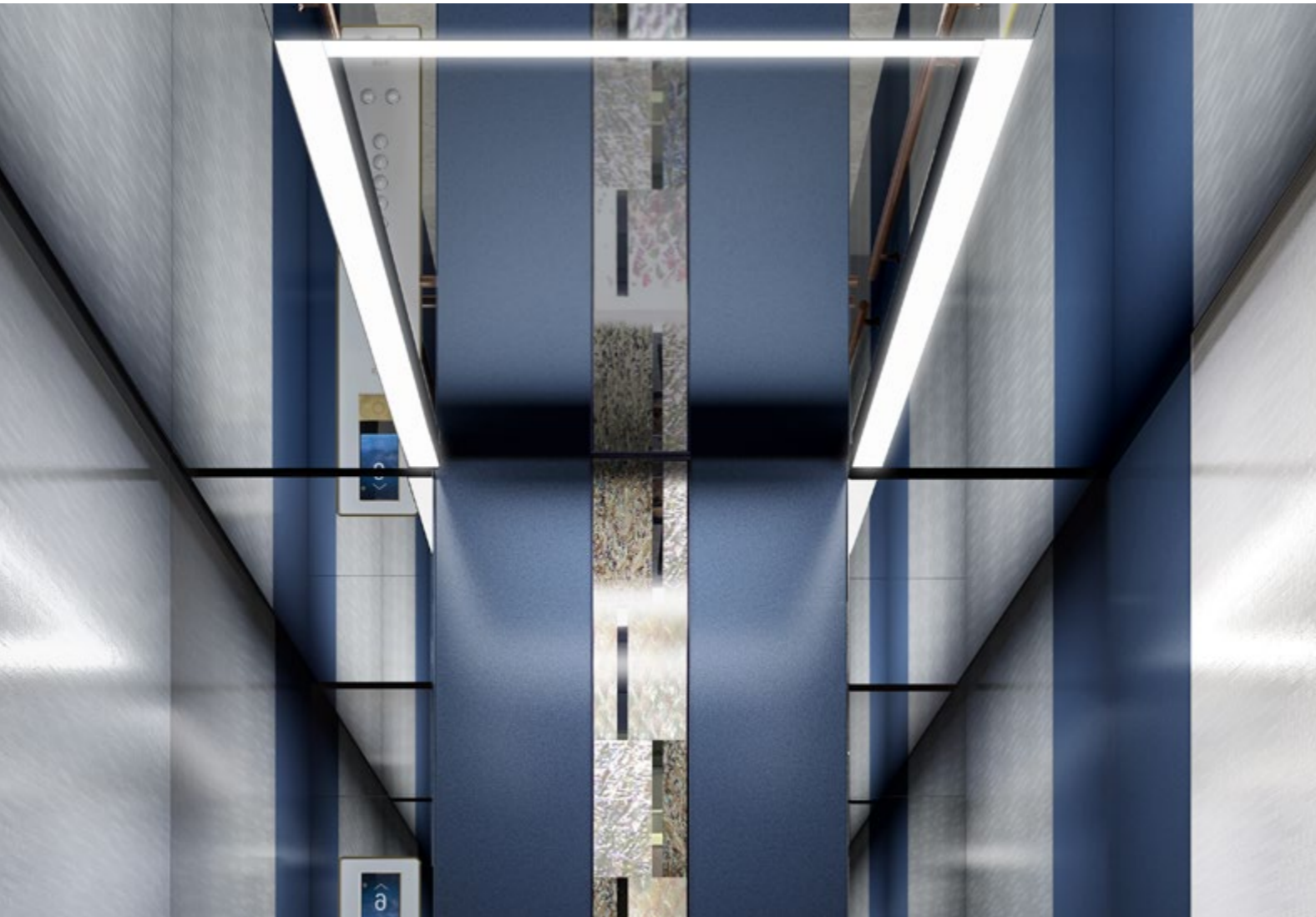
- High-end residential buildings
- Mid-range commercial buildings

SPECIFICATIONS

- Max. travel height: ≤45m
- Max. number of floors: ≤16
- Rated load: 320kg - 1,200kg
- Rated speed: 1.00m/s - 1.50m/s

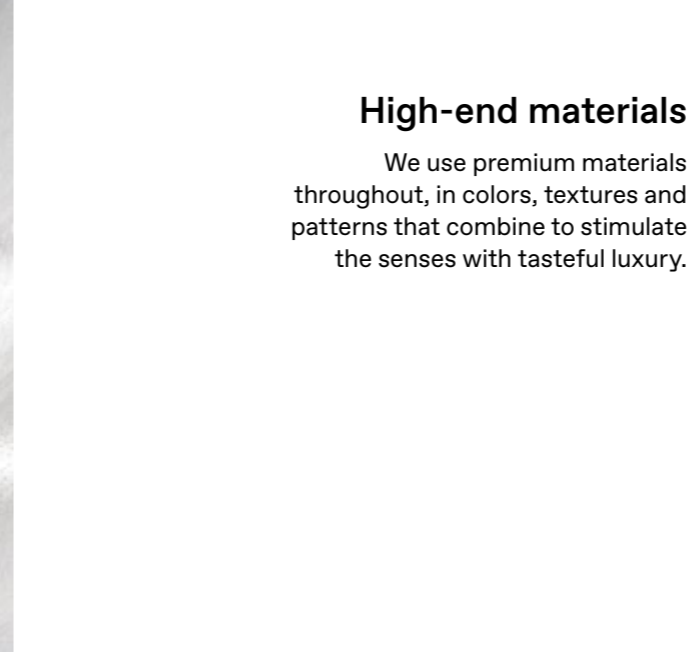
Increases your returns

A choice of trend-based cabin designs to enhance your building's premium.



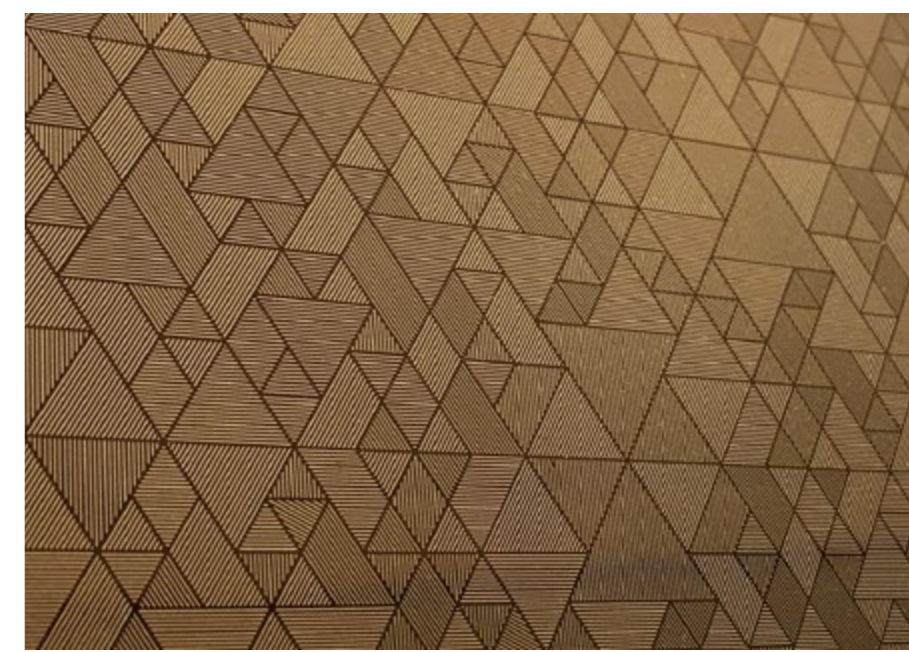
Trend based design

Our team constantly studies architectural and interior design trends and has created 6 cabins that complement the look and feel of every building.



High-end materials

We use premium materials throughout, in colors, textures and patterns that combine to stimulate the senses with tasteful luxury.

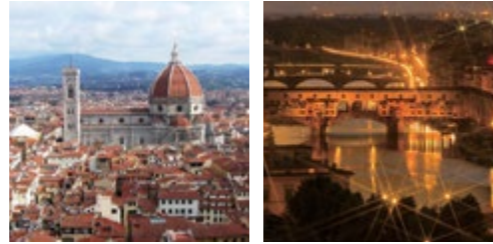


A premium look

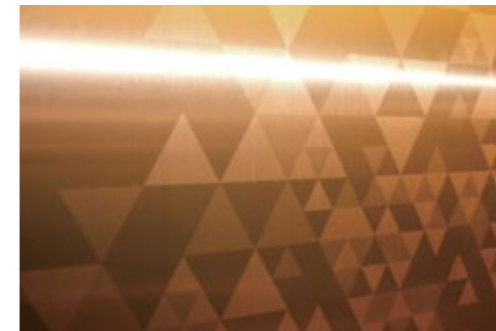
From the colorful superior screen to the sleek surface of the COP, each detail is carefully considered to give your building the premium look it deserves.

FIRENZE

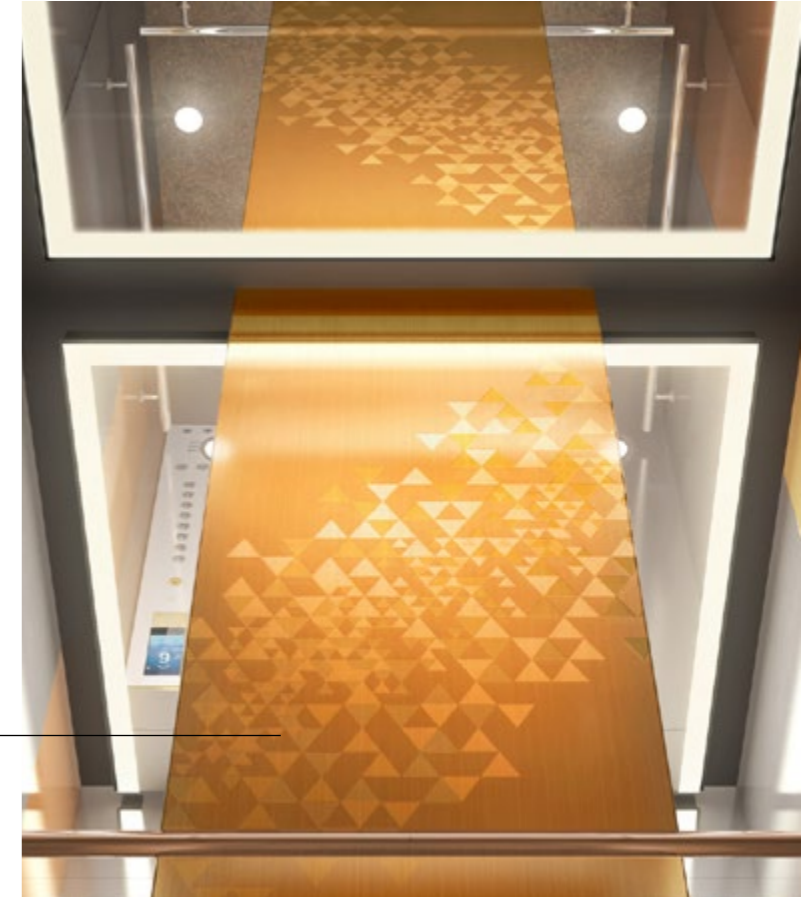
Inspired by the skyline of Florence, warm terracotta tones combine with abstract geometrical patterns to evoke rooftops under a starlit sky.



Material feature



Inspired by night views of the Ponte Vecchio in Florence, this chic design is right up-to-date.



CABIN DESIGN

Ceiling	CE-SC1W
Wall	STS Mirror, Hi-Vib, Fine art (NFA-04), Superteel (Bronze) + Laser graphic (ST-03BZ), Superteel (Bronze)
Door	Superteel (Bronze) + Laser graphic (ST-02BZ)
COP	DS-G-TK77G / HAS-G-TK77G (for disabled)
Handrail	HRR-01B
Floor	Decotile (DET6237)



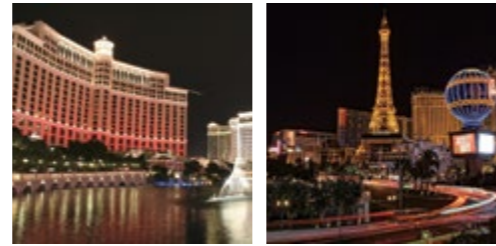
Main entrance



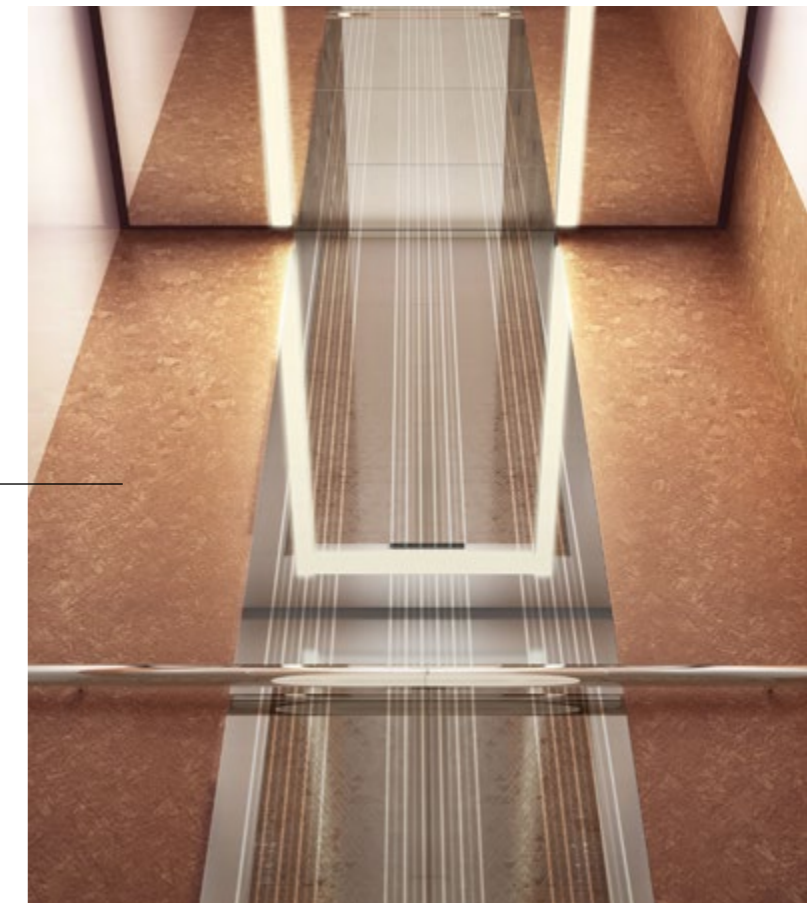
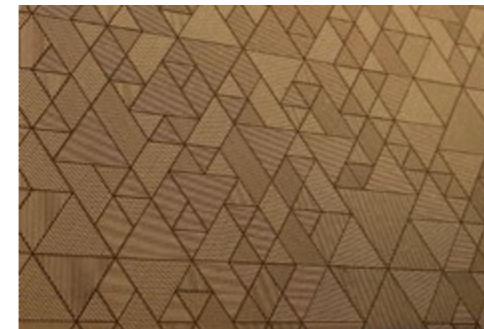
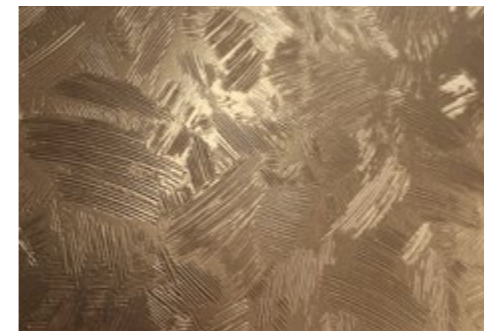
Other entrance

BELLAGIO

Modern opulence, blending eye-catching contemporary luxury and classical elegance.



Material feature



Inspired by the Bellagio Hotel, three dimensional patterns in bronze and gold reflect the opulence of Las Vegas.

CABIN DESIGN

Ceiling	CE-SB1W
Wall	Hi-Vib, STS Mirror + Laser graphic (LM-25) Vernox (Bronze)
Door	STS Ti-Bronze mirror, Nano etching (NE-02B)
COP	Smart COP (Option) HAS-H-TK11NB (for disabled)
Handrail	HRR-01G
Floor	Decotile (DEW4713 / DET2251)



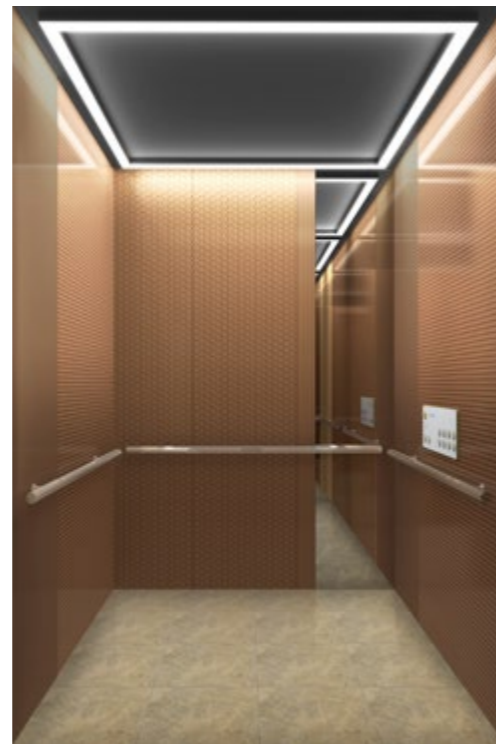
Main entrance



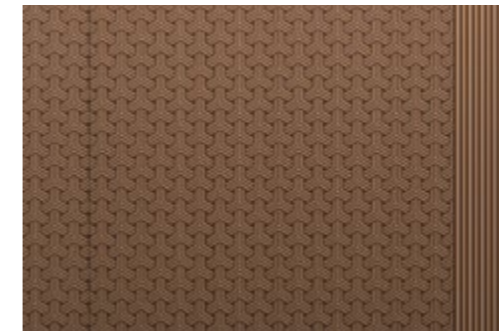
Other entrance

INCA

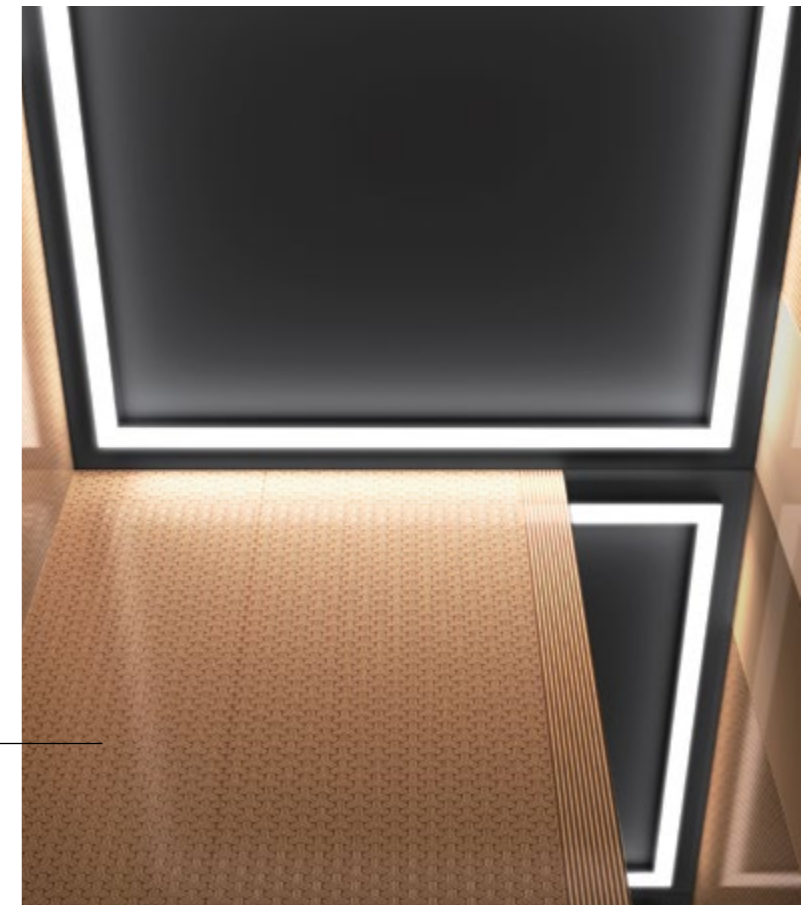
Sophisticated golden hues and complex patterns stir feelings of history and luxury.



Material feature



Classical design inspired by the ancient Inca Empire.



CABIN DESIGN

Ceiling	CE-SD1C
Wall	STS Mirror, Silk metal (SP-04BR), Silk metal (SP-05BR), Powder coat (Inca brown)
Door	Silk metal (SP-03BR)
COP	DS-G-TK77G / HAS-G-TK77G (for disabled)
Handrail	HRR-01G
Floor	Decotile (DET6240)



Main entrance



Other entrance

VENICE

Sparkling blues and mother-of-pearl blend with silver/gray elements reminiscent of the palazzos and waters of the canal city.

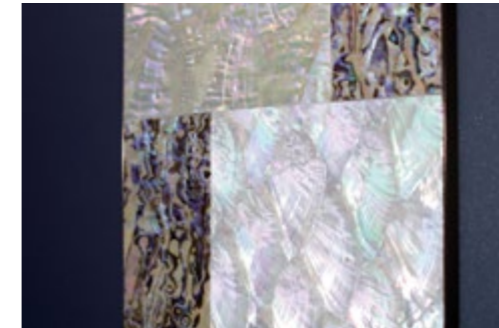


CABIN DESIGN

Ceiling	CE-SB1C
Wall	STS Mirror, Supervib (Silver), Texcoat (Navy) + Seashell panel, Texcoat (Navy), Fine art (NFA-04)
Door	Fine art (NFA-05)
COP	DS-G-TK77G / HAS-G-TK77G (for disabled)
Handrail	HRR-01B
Floor	Decotile (DET6258)



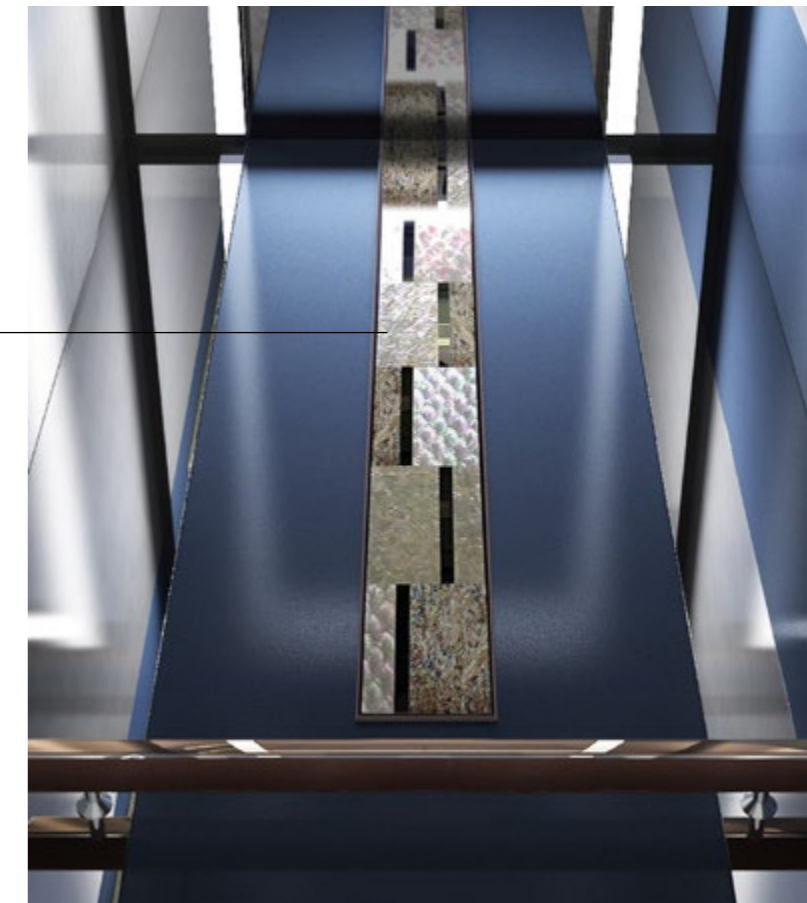
Material feature



An abstract twist on mother-of-pearl and glass adds Venetian sophistication.



Rich blues express the city's timeless link with the sea.



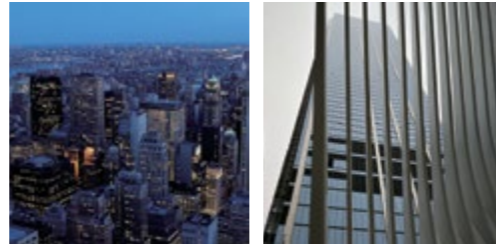
Main entrance



Other entrance

MANHATTAN

Sleek, dynamic and monochrome, the epitome of metropolitan style and success.

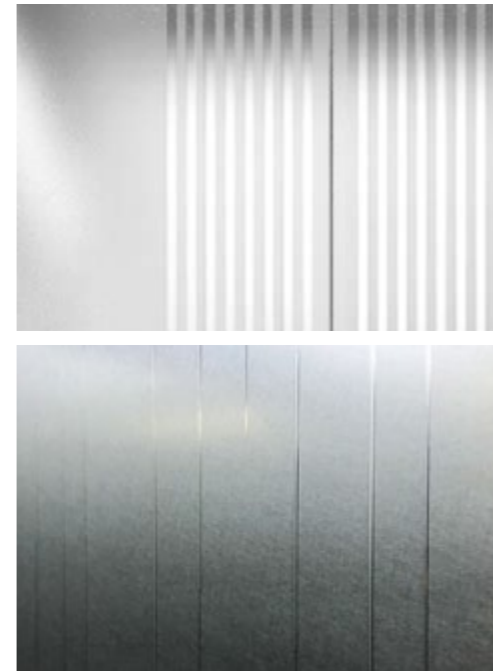


CABIN DESIGN

Ceiling	CE-SA1C
Wall	STS Mirror, Supervib (Silver), Hi-Touch (Rain)
Door	Hi-Touch (HT-01SV)
COP	DS-H-TK11NB / HAS-H-TK11NB (for disabled)
Handrail	HRR-01G
Floor	Decotile (DET2905)



Material feature



Silver, mirrors and steel. Urban sensibility with a New York attitude.



Main entrance

Other entrance

MILANO

Taking inspiration from the capital of Italian style and design, calming textures and simple geometries beautifully combined.



Material feature



Classic earth tones and patterns influenced by Mondrian.

CABIN DESIGN

Ceiling	FX-01
Wall	STS Mirror, Supervib (Silver), Hi-Touch (Gold)
Door	STS Mirror, Hi-Vib, Bead + Laser cutting (LM-20VB)
COP	DS-G-TK77G, HAS-G-TK77G (for disabled)
Handrail	HRR-01G
Floor	Decotile (DET2991, DET6239)



Main entrance



Other entrance

Underlines your building's premium

Beautifully crafted cabin options, inspiring fixtures and luxury materials combine to ensure that enta200 extends your building's premium into the elevator.



Elegance that sets your building apart

Slim fixtures with tactile and striking features include operating panels and indicators that integrate perfectly with contemporary and classic lobby designs that complement the look and feel of every building.



A choice of hall doors
Choose from 12 different hall or floor door patterns, each of which coordinates perfectly with our cabin designs and match your building's interior design floor-by-floor.

HALL DOORS



Main entrance

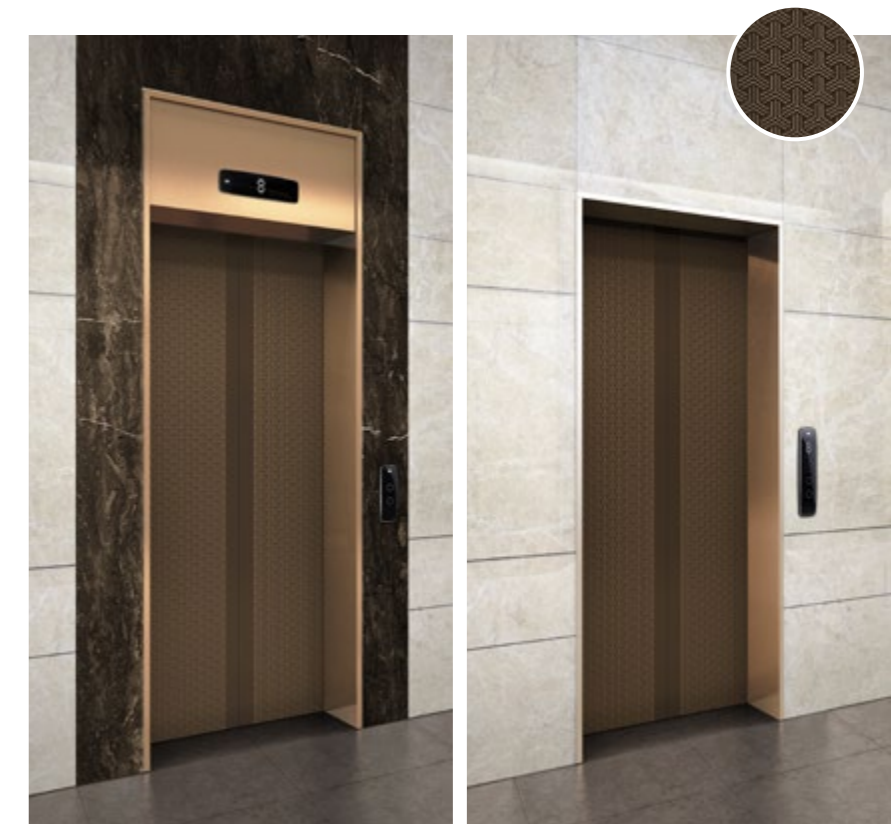
Other entrance

FIRENZE/BELLAGIO

Door	Main	Superteel (Bronze) + Laser graphic (ST-02BZ)
	Other	Silk metal (SP-02BR)
Transom		Supervib (Bronze)
Jamb	Main	Supervib (Bronze)
	Other	Supervib (Bronze)
LIOP	Main	BSK-TT44
	Other	BSK-TT44D
Indicator		HD-S-20D

INCA

Door	Main	Silk metal (SP-03BR)
	Other	Silk metal (SP-03BR)
Transom		Supervib (Bronze)
Jamb	Main	Supervib (Bronze)
	Other	Supervib (Bronze)
LIOP	Main	BSK-TT44
	Other	BSK-TT44D
Indicator		HD-S-20D



Main entrance

Other entrance

HALL DOORS



Main entrance

Other entrance

VENICE

Door	Main	Fine art (NFA-05)
	Other	Texcoat (Navy)
Transom		Texcoat (Navy)
Jamb	Main	Supervib (Silver)
	Other	Supervib (Silver)
LIOP	Main	BSM-TT44A
	Other	BSM-TT44AD
Indicator		HD-S-30D



Main entrance

Other entrance

MANHATTAN

Door	Main	Hi-Touch (HT-01SV)
	Other	Supervib (Silver)
Transom		Supervib (Silver)
Jamb	Main	Supervib (Silver)
	Other	Supervib (Silver)
LIOP	Main	BSK-TT44
	Other	BSK-TT44D
Indicator		HD-S-20D

MILANO

Door	Main	STS Mirror, Hi-Vib + Laser Cutting (LM-20V)
	Other	Supervib (Gold)
Transom		Supervib (Silver)
Jamb	Main	Supervib (Silver)
	Other	Supervib (Silver)
LIOP	Main	BSK-TT44
	Other	BSK-TT44D
Indicator		HD-S-20D



Main entrance

Other entrance

OPTIONAL DOORS

Door	Main	Fine art (NFA-03)
	Other	Supervib (Silver) + Laser Graphic (LM-09)
Transom		STS Mirror
Jamb	Main	STS Mirror
	Other	Supervib (Silver)
LIOP	Main	BSK-TT44
	Other	BSK-TT44D
Indicator		HD-S-20D



Main entrance

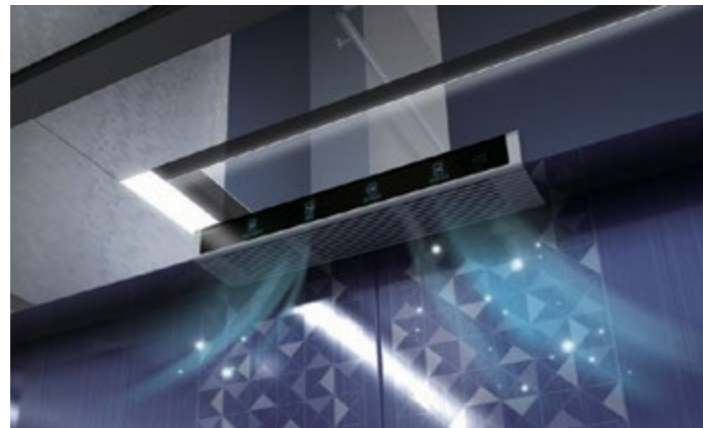
Other entrance

Provides a stylish experience

With spacious cabins, smooth journeys and clear controls designed for low-rise buildings, all users travel in comfort and style.

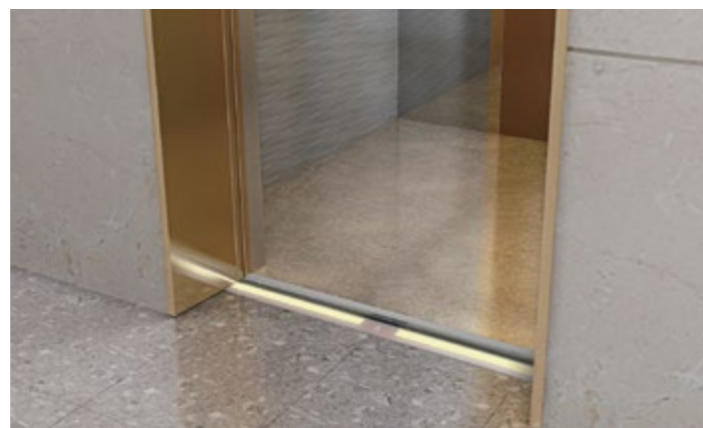
Total clarity and comfort

With a focus on usability, the colorful LCD display makes information easier to read. The image moves in the direction of the elevator to give a reassuring 'visual sense' of movement.



A comfortable atmosphere

Not just a relaxing, stylish passenger environment, each enta200 cabin incorporates an integrated air conditioning and purification system.



Easy boarding

LED hall sills flash to indicate arrival and doors closing, supplementing hall lanterns and chimes for extra clarity. Intelligent in-car announcements are all fully adjustable to communicate cabin status clearly and calmly.



Scan to see hall sill

PREMIUM FIXTURES



Smart COP

Our Smart COP brings the elevator ride to the next level. With innovative features and a premium design, it provides a stylish passenger experience.

10°



10° Tilted screen

The 10° tilted screen limits reflections, so it's easier to read.



Welcome light

When the doors are opening or closing, a blue welcome light blinks to alert the user.



Two color buttons

The backlit keys turn blue when the destination is selected.



Push type keyboard

Easy to use 10 digit push type keyboard.

Innovative features

Built right into the Smart COP to give your passengers the best experience.



Security

The embedded security camera with a 180° view of the cabin is accessible only to the building manager.



Handwriting

Use your fingers to write your destination directly on the touch screen.



RFID card reader

Use an RFID card or the contactless feature to directly access your floor.

Pioneering slim designs

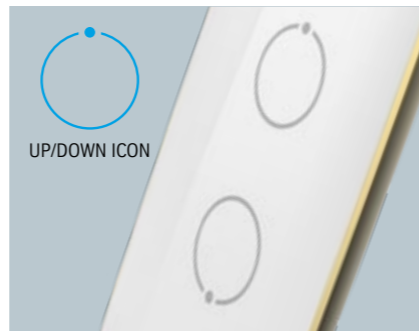
Unlike conventional flat fixture designs, these curved hall buttons have been meticulously designed to enhance the premium quality of any building. They deliver a superior user experience in terms of both look and feel.



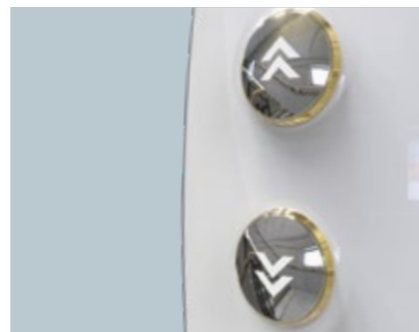
DESIGN FEATURES



Slim look
Designed for an enhanced sense of proportion.



Touch button
Simplified UP/DOWN graphic design and state-of-the-art touch button.



Push button
Rounded button design in stylish sapphire-white.

Slim LOP / LIOP with LCD display



HD-S-30L



HD-S-20L



BSM-TK77GL

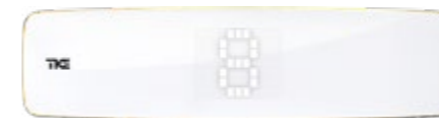
BSM-TT44AL



BSK-TK77BL

BSK-TT44L

Slim LOP / LIOP with matrix display



HD-S-30D



HD-S-20D



BSM-TK77G

BSM-TK77GD

BSM-TT44AD

BSM-TT44A

BSK-TK77B

BSK-TK77BD

BSK-TT44D

BSK-TT44

Dynamic TFT LCD display

Crystal clear, vibrant graphics put passengers at ease and guide them to their destination.



DS-F-TT22

DS-G-TK77G

DS-H-TK11NB



Side lighting with LED illumination

Dynamic LCD display supports background motion when the elevator is moving

High quality sound through sunburst pattern speaker and integral microphone



Scan to see dynamic LCD display

COP assisting the disabled



HAS-G-TK77G



HAS-H-TK11NB



BSN-TK11NBD



BSN-TK11NB

Simple and classic design



Standard edge button



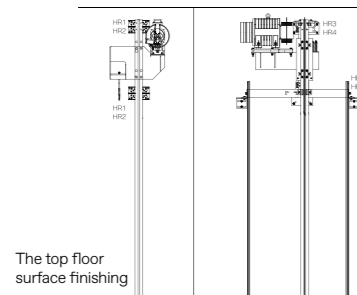
Push button LOP / LIOP

This neat, rectangular design comes in stainless steel or smart black. Designed as a premium accent to any building.

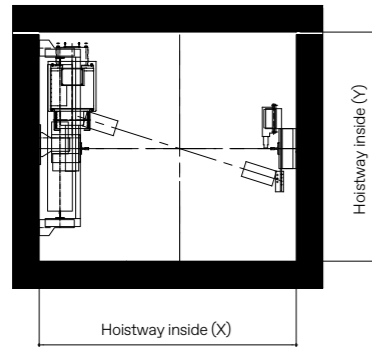


PLANNING INFORMATION

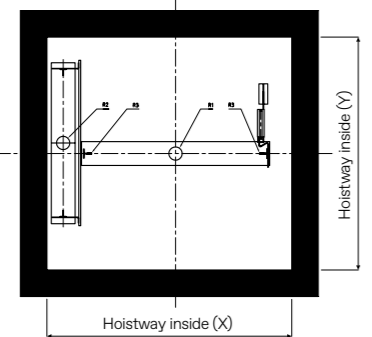
Overhead section



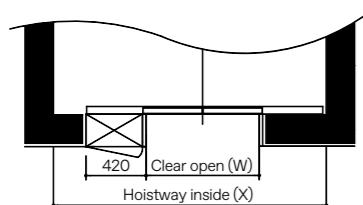
Overhead floor plan



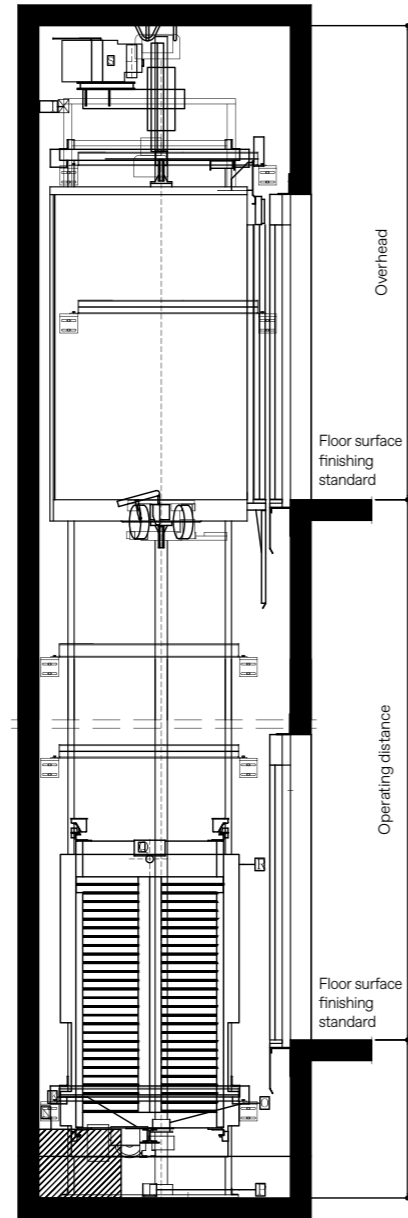
Pit floor plan



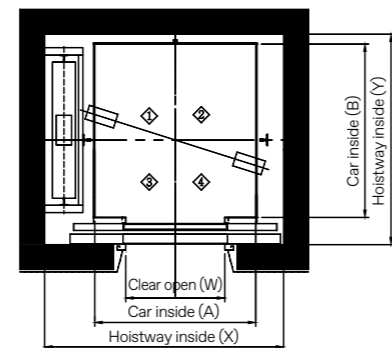
Detailed map of the three-sided top floor



Hoistway section



Hoistway floor plan



STANDARD SIZE (MINIMUM SIZE) & POWER CAPACITY

SPEED (M/S)	LOADING CAPACITY (KG)	DOOR OPENING (MM)	CAR SIZE (A×B) (MM)	CO SHAFT SIZE (X×Y) (MM)	2S SHAFT SIZE (X×Y) (MM)	MOTOR CAPACITY (KW)	MCCB CAPACITY (A)	HOOK APPLICATION LOAD (KG)	
1.00	320	700 × 2100	850 × 1000	1600 × 1450	1440 × 1510	2.8	20	1500	
	450		1000 × 1200	1750 × 1550	1630 × 1610				
	550 a		1100 × 1250	1800 × 1570	1680 × 1630				
	550 b	800 × 2100	1200 × 1180	1850 × 1490	1780 × 1550	4.0			
	630 a		1100 × 1400	1800 × 1710	1680 × 1770				
	630 b		1200 × 1250	1850 × 1570	1780 × 1630				
	680		1200 × 1350	1850 × 1690	1780 × 1750				
	750 a		1300 × 1400	1900 × 1710	1900 × 1770				
	750 b		1200 × 1450	1850 × 1760	1780 × 1820				
	800		1350 × 1400	2070 × 1710	1960 × 1770	6.3			
	900	900 × 2100	1600 × 1350	2200 × 1690	2230 × 1750				
	1000 a		1600 × 1400	2200 × 1710	2210 × 1800				
1000 b (Deep car)	800 × 2100		1100 × 2100	1850 × 2410	1710 × 2470				
1000 b (Deep car)	900 × 2100	1100 × 2100	2000 × 2410	1710 × 2470		3000			
1150 a	1000 × 2100	1800 × 1450	2400 × 1760	-		40			
1150 b	900 × 2100	1600 × 1650	2200 × 1960	-	8.0				
	1000 × 2100	1600 × 1650	2300 × 1960	-					
1200 a	1000 × 2100	1800 × 1450	2400 × 1760	-					
1200 b	900 × 2100	1600 × 1650	2200 × 1960	-	8.3				
	1000 × 2100	1600 × 1650	2300 × 1960	-					
1.50	550 a		1100 × 1250	1800 × 1570	1680 × 1630		40	1500	
	550 b		1200 × 1180	1850 × 1490	1780 × 1550	6.0			
	630 a		1100 × 1400	1800 × 1710	1680 × 1770				
	630 b	800 × 2100	1200 × 1250	1850 × 1570	1780 × 1630				
	680			1200 × 1350	1850 × 1690	1780 × 1750			
	750 a			1300 × 1400	1900 × 1710	1900 × 1770			
	750 b		1200 × 1450	1850 × 1760	1780 × 1820				
	800		1350 × 1400	2070 × 1710	1960 × 1770	9.5			
	900	900 × 2100	1600 × 1350	2200 × 1690	2230 × 1750				
	1000 a		1600 × 1400	2200 × 1710	2210 × 1800				
	1000 b (Deep car)		800 × 2100	1100 × 2100	1850 × 2410	1710 × 2470			
	1000 b (Deep car)	900 × 2100	1100 × 2100	2000 × 2410	1710 × 2470				3000
1150 a	1000 × 2100	1800 × 1450	2400 × 1760	-		12.0			
1150 b	900 × 2100	1600 × 1650	2200 × 1960	-					
	1000 × 2100	1600 × 1650	2300 × 1960	-					
1200 a	1000 × 2100	1800 × 1450	2400 × 1760	-					
1200 b	900 × 2100	1600 × 1650	2200 × 1960	-	12.5				
	1000 × 2100	1600 × 1650	2300 × 1960	-					

Remark: These dimensions are valid for elevators following the EN81-20/50 code

MACHINE BEAM REACTION VALUE & PIT REACTION VALUE

UNIT: KG

LOADING CAPACITY (KG)	GOV-AXIS CAPACITY (WALL-WEIGHT)		TM-AXIS CAPACITY (WALL-WEIGHT)		CAR-AXIS BUFFER IMPULSE LOADING	CWT-AXIS BUFFER IMPULSE LOADING	CAR-AXIS IMPULSE LOADING AT EMERGENT STOP	GUIDE SHOE REACTION	
	HR1	HR2	HR3	HR4				R1	R2
320					4430	3700	3500		
450					5230	4200	4000		
550 a					6100	4750	4520		
550 b					6150	4790	4550	88	90
630 a					6610	5070	4860		
630 b					6610	5070	4860		
680					7290	5630	5320		
750 a	650	300	1250	750	7790	5970	5740		
750 b					7670	5850	5650		
800					8460	6530	6180		
900					9640	7470	6930	175	225
1000 a					10140	7750	7220		
1000 b (Deep car)					10140	7750	7220		
1150 a					10770	8030	7550		
1150 b	800	450	1500	900	10980	8120	7660	215	260
1200 a									

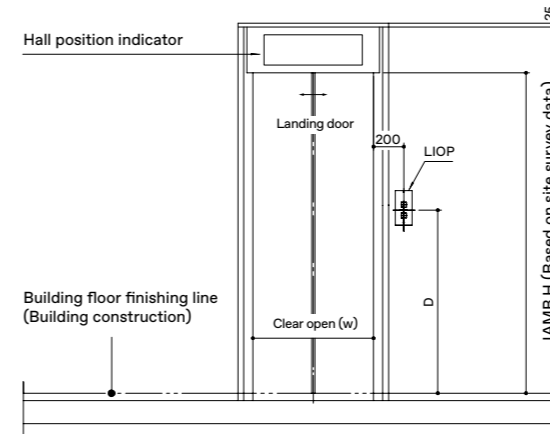
OVERHEAD & PIT

SPEED (M/S)	OVERHEAD* (MM)		PIT (MM)
	BELOW 1000KG	EXCEED 1000KG	
1.00	3800	3900	1150
1.50	3900	4000	1500

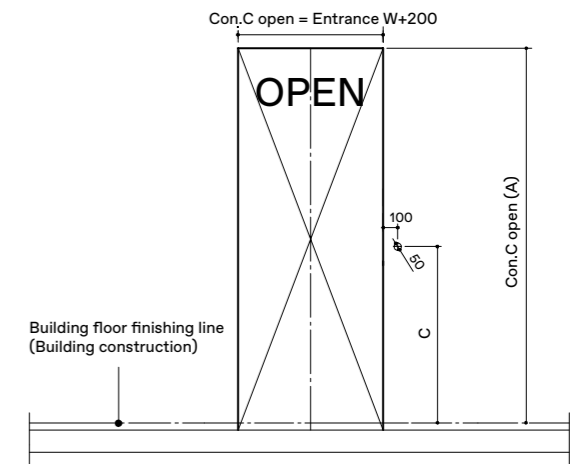
*The overhead size needs to be adjusted when an air-conditioner is added to the car.
Remark: Marble floor and air-conditioner cannot be installed at the same time due to load limit.

ENTRANCE

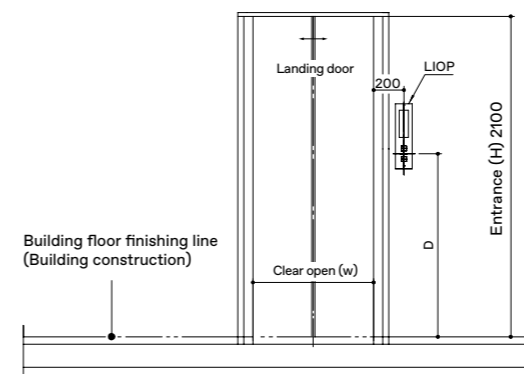
Main entrance (with transom)



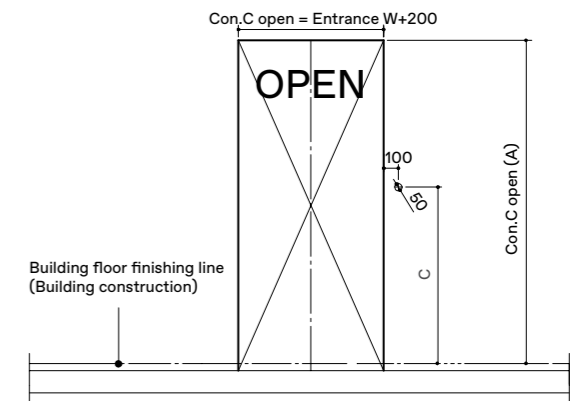
Structural opening (with transom)



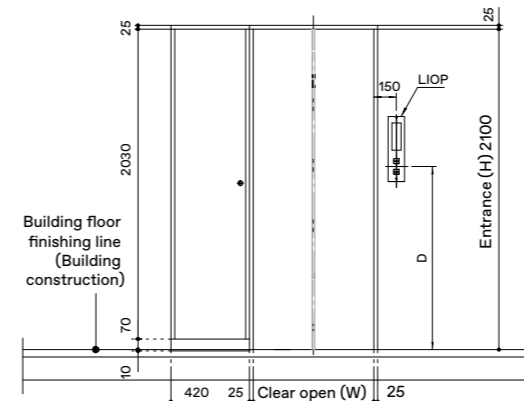
Other entrance (without transom)



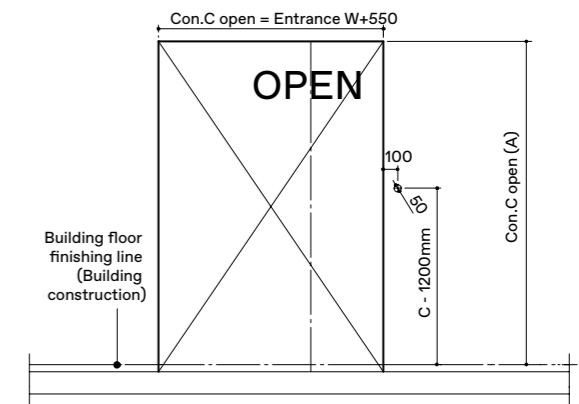
Structural opening (without transom)



Entrance (top floor) with control panel



Structural opening (top floor)



	WITH TRANSOM	WITHOUT TRANSOM	FOR THE DISABLED
Opening area height (A)	2500mm	2200mm	-

YOUR INNOVATION PARTNER

elevators and escalators in service

countries serviced

1,200,000 100+

employees

50,000+

service available for customers

locations

24/7 1,000+

service technicians

24,000+



WWW.TKELEVATOR.COM